



www.stringswing.com

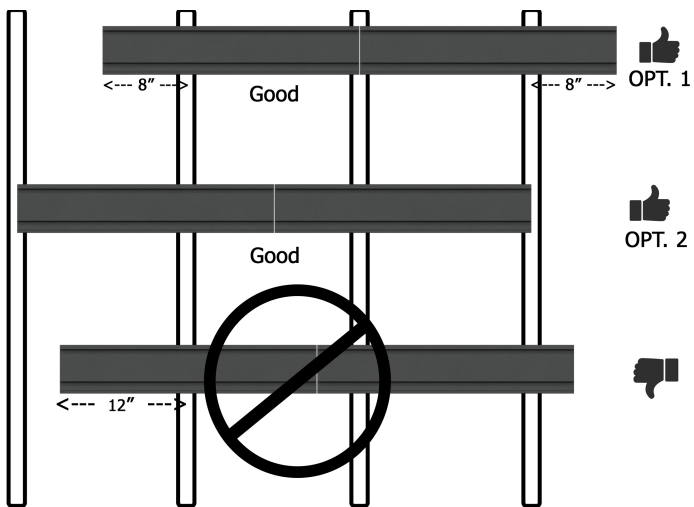
SW10RL 10 Guitar Wall Rack

*This product is two of our SW5RL 5 guitar wall racks packaged together. Rails could be used independently or joined together for one continuous system.



1

Choose a location for your display.
NOTE: If your display goes to a corner, start there and work away.
NOTE: Studs must be within 8", or less of the end of the rail. See figure to the right for reference in choosing a location.

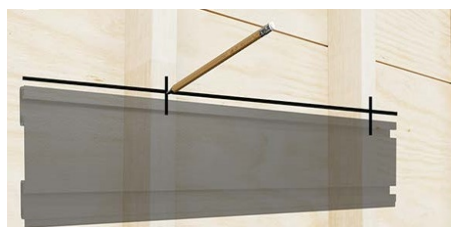


2



Hold first 24" rail against wall at selected location. Check level, and draw a line along the top of the rail.

3



Using your preferred method, locate and mark every stud along the line. Transfer stud marks into top and bottom channels.

4



Insert mounting screw into screw guide.
NOTE: The mounting screws included are self-drilling. The screw itself will drill the hole it requires.

6



Insert included joiner plate as shown and tap into place, so the holes in the plate are half covered by the rail mounted to the wall. This plate is needed for strength & alignment.

8



With arch facing outward, insert screw cover strip from end of rail if accessible, otherwise press into slot with pen or marker.

5



Level the rail and drive screws at each stud location in both the top and the bottom channels of first 24" rail section.
NOTE: If joining rails end to end and a stud aligns with the joint of the two rails, mount the outside two studs first, then drive screws through the center seam.

7



Add the next 24" rail and repeat step 5 to securely mount to every stud along entire length of the display,
NOTE: Tap opposite end of the rail as needed to close gap in seam.

9



Remove paper backing from white adhesive square. Place face down on rail as shown. Remove paper backing from second side and align end cap for desired finish.

10



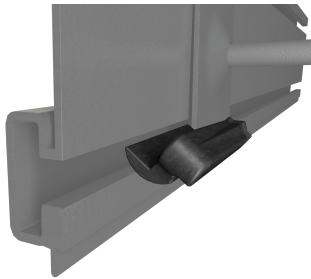
Press end cap firmly against rail for maximum bond strength. (Adhesive bonds instantly so you have one chance.)

11



Tilt hanger to insert into top channel of slatwall rail at desired location.

12



Tilt and hook slatwall clip into bottom channel of rail on the left side of the hanger.

13



Slide clip to the right. Clip should snap into place when fully inserted.

14



Remove black cap protecting the threads of the cradle.

15



Thread cradle into pivoting end of hanger until snug, but not tight. Tighten thumb screw to lock hanger at desired angle.

Components:

Part:

Description:

Quantity:



SW12RAIL

24" Slatwall Panel

4



BCC03RL-5

Pivoting Slatwall Hangers

10



Yoke-K

Guitar Keeper Cradles

8



SW1EC

End Cap

8



Insert

24" Vinyl Screw Cover Channel Insert

8



White Adhesive Square

Adhesive Square

4 sheets of 6



CLIP

Slatwall Clips

10



Joiner Plate

Joiner Plate

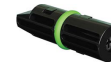
4



8X2"selfdrillingscrew

Mounting Screw

16



Screw Guide

Screw Guide Kit

1



Phillips bit

Phillips bit

1